



WEEKLY REPORT

WEEK #35



TABLE OF CONTENT

NEWS	2-8
COMMUNITY ACTIVITIES	9-10
STATS	11
PLATFORM EXTENSION	12-15

NEWS

As we skipped our weekly reports during the past weeks due to the many things that required special attention, this one is more of a monthly report to gather the highlights we saw in August. There have been quite a few since we've gone through two launches, one being the migration from GYM NETWORK V1.5 to V2.0 and the other the launch of GYM STREET, our metaverse.

V2.0 MIGRATION

The community transfer was done in the second week of August. After a bumpy start with some technical hurdles, the migration was fully accomplished for most users.

If you haven't done your V2 migration yet, you can still do it via this link:

<https://old.gymnetwork.io/dashboard/community-transfer>

Just click on the **"START MIGRATION"** button and follow the steps.

USER SUPPORT

If you need technical support, you can also contact our support team directly via email: support@gymnetwork.io

Every Support Request Should Always Contain This Information:

1. Your Wallet Address
2. A Clear Description Of Your Issue
3. Screenshots That Show The Issue
4. The Device You Are Using (E.G., Iphone, Android, Pc, Mac)
5. Your Browser (E.G., Chrome, Firefox, Safari)

NEWS

METaverse LAUNCH EVENT IN DUBAI

WHAT AN AWESOME DAY

Many top leaders and externals simply attracted by our vision to become the first financial METaverse came to DUBAI to join our event.

Here they learned more about **GYM NETWORK** and **GYM STREET** and got to know the entire team behind our project.

We had many exciting conversations and interviews with new people who really loved our concept.

For those of you who could not be there live, you can get some impressions here:

<https://youtu.be/nuCOXOHf72s>

A night-time photograph of the Dubai skyline, featuring several illuminated skyscrapers against a dark blue sky. The text 'DUBAI IMPRESSIONS FROM OUR METAVERSE LAUNCH EVENT' is overlaid on the image in a large, white, sans-serif font.

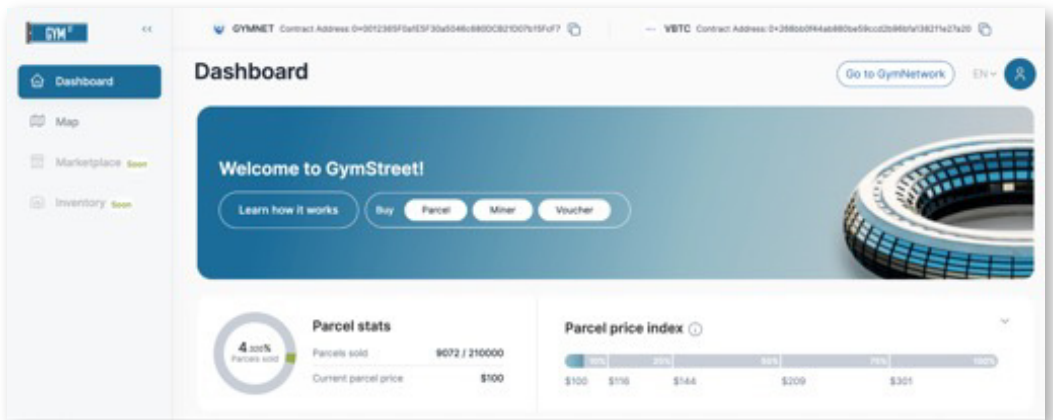
DUBAI
IMPRESSIONS
FROM OUR METAVERSE LAUNCH EVENT

NEWS

GYM STREET METAVERSE LAUNCH

THE GYM STREET METAVERSE
WAS LAUNCHED ON 23 AUGUST.

MORE THAN 9000 LAND PARCELS
HAVE BEEN SOLD ALREADY,
MOST FULLY EQUIPPED WITH
FOUR VIRTUAL MINERS.



GYM STREET VIDEO TUTORIAL SERIES

We have prepared a video tutorial series to help you get started with **GYM STREET** and take you through the steps to become a virtual land owner and place your virtual miners.

On the new **GYM STREET** YouTube channel, you'll find the playlist "Tutorials" where we're now adding the videos, so please check in regularly. These tutorials will be available:

1. How To Connect Your Wallet And Register
2. How To Purchase A Land Parcel
3. How To Purchase Miners
4. How To Purchase Electricity Vouchers
5. How To Purchase A Land + Miner Bundle
5. How To Upgrade Your Land
5. How To Check Your Rewards

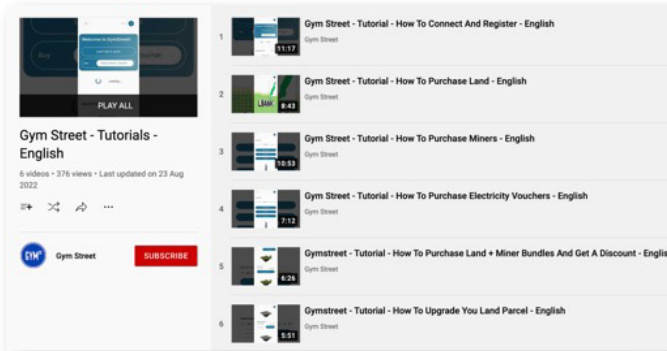
The tutorials are quite detailed to ensure you don't miss any relevant information.

All tutorials are available in English! More languages are coming very soon!

NEWS

The tutorials have been recorded using Trust Wallet on a mobile device (iPhone). Android should be very similar. Though, some settings might be found at different locations within the app. Following the process on MetaMask will also be very similar.

<https://www.youtube.com/playlist?list=PLhsOZlpakKngXffpwjsAPDMmDDzoDIDPO>



OUR NEW GITBOOK IS HERE!

With the launch of our new platform, the documentation was also completely revised. You can now get comprehensive information about GYM NETWORK and our products - in **12 LANGUAGES!**



Explore the new Gitbook via this link:

<https://docs.gymnetwork.io/>

NEWS

BUY & BURN WITH THE GOAL OF CONSTANT PRICE INCREASE

We understand that many have been watching the **GYMNET** price since the launch, expecting to see it skyrocket. Please remember that we have a linear buy & burn mechanism to generate constant, long-lasting demand instead of short-term spikes.

Our main goal is to create a stable, long-lasting platform with the ability to provide our users with a reliable source of income. If you're looking for a quick in-and-out, please look elsewhere. We are going after a much bigger vision.

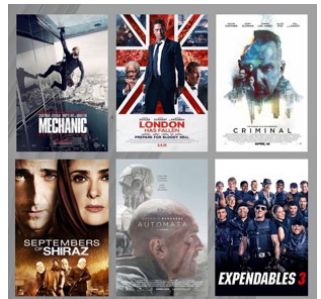
IMMERSE FX – A VISUAL EFFECTS COMPANY TO BUILD OUR METAVERSE

Have you seen any of these movies? What would you say if the same company that provided the visual effects for blockbusters such as London Has Fallen or Expendables is the same that builds the visuals for **GYM STREET** Metaverse?

GUESS WHAT, THAT'S EXACTLY WHAT WE HAVE!

"Experienced Finance" will not only be about a new way of interacting with finance products but will also offer a brand-new visual experience. While most metaverses out there so far stick with comic-style graphics, we aim to set the bar higher and make **GYM STREET** a photorealistic virtual world that creates a "WOW-EFFECT" the moment you enter it.

THINK THAT'S COOL? SO DO WE!



NEWS


GYMNET LISTING ON LBANK EXCHANGE

GYMNET is now listed on LBANK Exchange, currently ranked 15 on CoinMarket-Cap with a **24h volume** of **\$1,000,000,000**. LBANK is also going to open up a branch in GYM STREET to become our first external partner in our Metaverse! They understood the value and vision of our Metaverse and project.

On top of that, we have negotiated a special affiliate deal to participate in the trading revenue that will be used entirely to add more burn-power to the **GYMNET Buy & Burn Mechanism**.

Not an LBANK member yet? Signup here using the GYMNET Burn-Power-Reflink:

<https://www.lbank.info/invitevip?icode=LEONK>

 LBANK

GYMNET [Gymnetwork]
Listing on LBank

GYMNET /USDT



Deposit Open:
08/31 18:00 (UTC+8)

Trading Open:
09/01 18:00 (UTC+8)

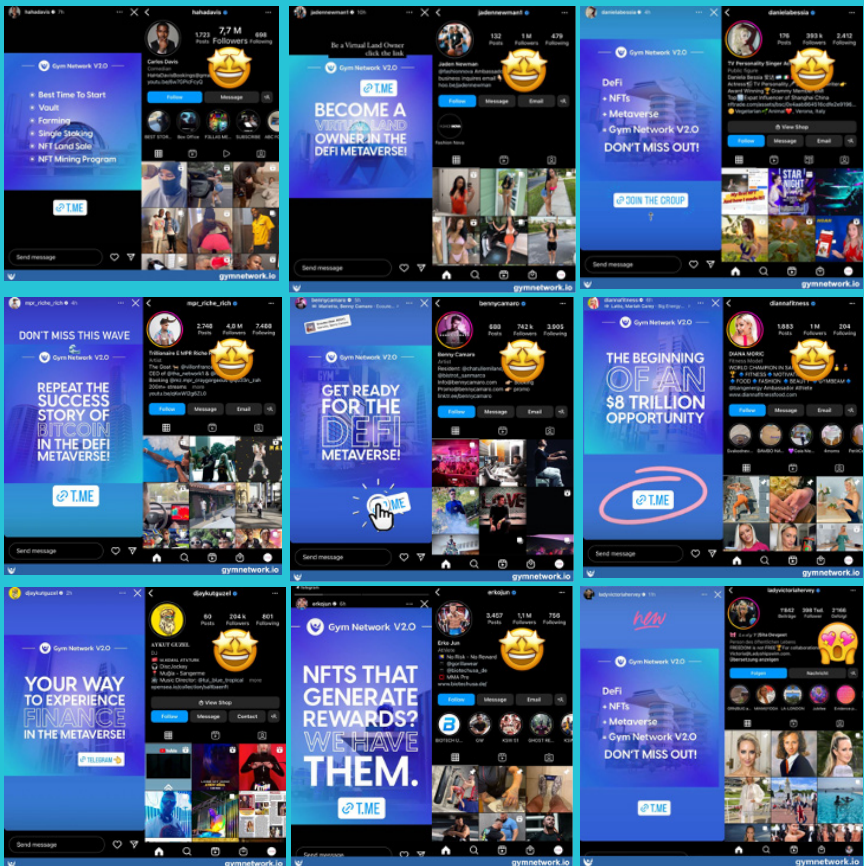
Withdrawal Open:
09/02 18:00 (UTC+8)



COMMUNITY ACTIVITIES

INFLUENCER CAMPAIGN

During the pre-launch for GYM STREET, we have run a huge influencer campaign on Instagram, reaching more than 17 million followers of various celebrities.



COMMUNITY ACTIVITIES

OFFICIAL PARTNERSHIP WITH TRAVLADD CRYPTO

We have got exciting news to share!

Gym Network has officially partnered with Travladd Crypto ~ Serious Investor Group (aka AMA Central), one of the biggest Telegram influencers in the crypto space with **70,000+ group members**.

AMA Central is built by one of the most competitive marketing teams in DeFi. With more than **400,000 followers** on their socials, they have become one of the market's biggest DeFi Telegram and Twitter influencers. As our official advisor, they will regularly update their community about **GYM NETWORK's** offerings.

Follow AMA Central on Telegram: **@AMA_Central**



STATS



Holders

7,130



Investors

25,114



Telegram
Users

26,399



Twitter
Users

19,700



YouTube
Users

3,380



Vault Status

\$30,850,000

Total Value Locked



Farm Status

\$5,100,000

Liquidity



Single Pool

59,465,000

Total GYMNET Locked



Total GYMNET Burn

4,650,000
Gymnet



GYMNET Price

\$0.09

PLATFORM EXTENSION

GYM NETWORK V2.0

Our platform got a completely new look! Both the website as well as the dashboard have been completely redesigned. In the course of the migration to V2.0, many functions that you've been waiting for were implemented:

BUSD VAULT

You can now deposit the BUSD stablecoin into the Vault and earn **GYMNET** rewards.

The screenshot shows the 'Vaults' section of the GYM Network dashboard. It features a sidebar with navigation options: Dashboard, Vaults (selected), Farming, Single pool, Holder Rewards, Miner Rewards, and Help center. The main content area displays the user's vault information, including a 'Total vaults deposit' of \$25.00 and 'Total GYMNET vaults rewards' of 3.84. Below this, there is a table listing vaults for BNB and BUSD.

	TVL	APR	Total staked	Share of pool
BNB	\$ 11,450,702.37	19.05%	\$0.00	0 %
BUSD	\$ 5,938,685.25	38.74%	\$25.00	0.00%

BUSD/GYMNET & BUSD/VBTC FARM

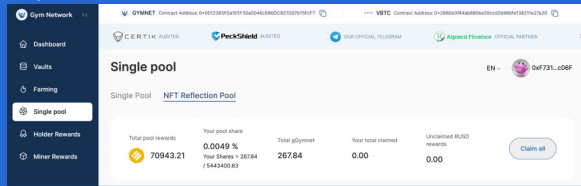
The BUSD Farm is also available now. Compound your **GYMNET** with a current APR of 197%. Additionally, you can now add liquidity to the BUSD/VBTC Farm and earn VBTC rewards that way.

The screenshot shows the 'Farming' section of the GYM Network dashboard. It features a sidebar with navigation options: Dashboard, Vaults, Farming (selected), Single pool, Holder Rewards, Miner Rewards, and Help center. The main content area displays a table of farming opportunities.

	APR	Daily ROI	Hourly ROI
BNB-GYMNET	103.34 %	0.2831 %	0.0118 %
BUSD-GYMNET	197.61 %	0.5414 %	0.0228 %
BUSD-VBTC	18.52 %	0.0507 %	0.0021 %

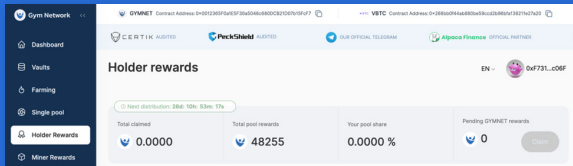
SINGLE POOL & NFT REFLECTION

Since GYM NETWORK V2.0 and the launch of **GYM STREET**, you can now deposit your **GYMNET** in the Single Pool with a locking period to earn **GYMNET** rewards and also participate in the NFT Reflection Pool, where you receive a share of the NFT sales on GYM STREET.



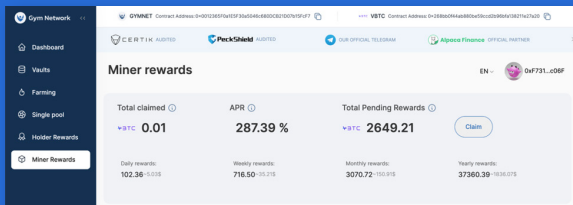
HOLDER REWARDS

The Holder Rewards are now available, meaning that you will receive **GYMNET** rewards simply for holding **GYMNET** tokens in your wallet. Only requirement: You need to hold an amount for at least 30 days.



MINER REWARDS

If you have land parcels with active virtual miners in **GYM STREET**, you'll be able to claim your VBTC rewards from your **GYM NETWORK** Dashboard.



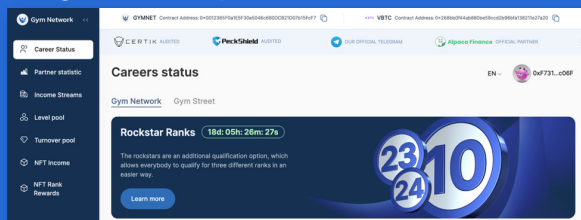
ROCKSTAR RANKS

The Rockstar Ranks is an additional qualification option that allows everybody to qualify for three different ranks more easily.

You can check out the Rockstar Ranks here:

[here: https://gymnetwork.io/careers-status](https://gymnetwork.io/careers-status)

The purchase amount goes to the Buy & Burn Mechanism.



PLATFORM EXTENSION

GYM STREET

BIG LAND & MINER BUNDLES

Due to blockchain limitations, we had to restructure the Big Land & Miner Bundles to fit into one transaction.

The Big Land & Miner Bundles now range from 4 to 240 units per bundle and are separated into land and miners to fit them in one transaction.

All of them are available with a discount, so you can still save up to 18%.

The only difference is that you'll need to purchase land and miners separately.

Here is the complete overview of the available Land & Miner Bundles:

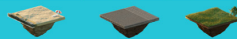
PRICING BASIC MINER SINGLE BUNDLES

BASIC BUNDLES	BASIC MINER	REGULAR PRICE	DISCOUNT	FINAL PRICE
4 Basic Miner Bundle 80 Mh/s	4	\$200	5% <small>SAVE \$10</small>	\$190
10 Basic Miner Bundle 200 Mh/s	10	\$500	8% <small>SAVE \$40</small>	\$460
40 Basic Miner Bundle 800 Mh/s	40	\$2,000	10% <small>SAVE \$200</small>	\$1,800
80 Basic Miner Bundle 1600 Mh/s	80	\$4,000	12% <small>SAVE \$480</small>	\$3,520
140 Basic Miner Bundle 2800 Mh/s	140	\$7,000	16% <small>SAVE \$1,120</small>	\$5,880
240 Basic Miner Bundle 4800 Mh/s	240	\$12,000	18% <small>SAVE \$2,160</small>	\$9,840



PRICING BASIC LAND SINGLE BUNDLES

BASIC BUNDLES	BASIC LAND PARCELS	REGULAR PRICE	DISCOUNT	FINAL PRICE
4 Basic Land Bundle	4	\$400	5% <small>SAVE \$20</small>	\$380
10 Basic Land Bundle	10	\$1,000	8% <small>SAVE \$80</small>	\$920
40 Basic Land Bundle	40	\$4,000	10% <small>SAVE \$400</small>	\$3,600
80 Basic Land Bundle	80	\$8,000	12% <small>SAVE \$960</small>	\$7,040
140 Basic Land Bundle	140	\$14,000	16% <small>SAVE \$2,240</small>	\$11,760
240 Basic Land Bundle	240	\$24,000	18% <small>SAVE \$4,320</small>	\$19,680



PRICING BASIC LAND+MINER STARTER BUNDLE

BASIC BUNDLES	BASIC LAND PARCELS	BASIC 20TH/s MINERS	PRICE	DISCOUNT	FINAL PRICE
1 Bundle 80 Mh/s	1	4	\$300	5% <small>SAVE \$15</small>	\$285



PLATFORM EXTENSION

LAND BUNDLE DISCOUNT ON MAP

When you choose your land on the map, the calculator automatically detects the number of parcels and shows the discount.

GYMNET Contract Address: 0x0012365F0a1E5F30a5046c680DCB21D07b15FcF7

VBTC Contract Address: 0x268bb0f44ab880be59ccd2b96bfa13821e27a20

Dashboard

Map

Marketplace *Soon*

Inventory *Soon*

Miner Rewards

Partner area

Map

Go to GymNetwork EN

43, 1364

On Sale

Size
7 x 7 49 parcels

Type
Standard

Location
Inland

~~4900.00~~ Discount: 10%
4410.00 BUSD

Buy now



GYM Network 

@GymNet_Official 

GYM NETWORK 

 **Gym Network**